



Authorised Hallam Rack Distributor

VICTORIA -

Ph: 03 9329 6866

Fx: 03 9329 6052

Email: cpsales@cablesplus.com.au

TASMANIA -

Ph: 03 6431 8660

Fx: 03 6431 4430

Email: cablesplustas@bigpond.com



Hallam

Rack Accessories

Fixed Shelves	3	Earth Bar	12
Cantilever Shelves	3	Earth Lead	12
Telescopic Shelves	4	Vertical Telephone Distribution	12
Telescopic Keyboard Shelves	4	Telescopic Drawers	13
Keyboard Shelves	5	Equipment Support Brackets	13
Horizontal Power	5	Blank Panels	14
Vertical Power	6 & 7	Patch Panels	14
Fan Tray	8	Document Holder	15
Plinth Fan Unit	8	Castors & Levelling Feet	15
Cable Tray	9	Mounting Kit	16
Cable Support Brackets	9	Joiner Kit	16
Cable Support Panels	10	Reduction Plates	17
Cable Support Panels (velcro)	10	Telescopic Rails	18
Hinged Cable Carriers	11	Customising	19
Cable Chimney	11		
Patch Lead Manager	11		

INTRODUCTION

At Hallam Manufacturing we have created a large range of accessories to enhance and modify our existing rack and cabinet systems.

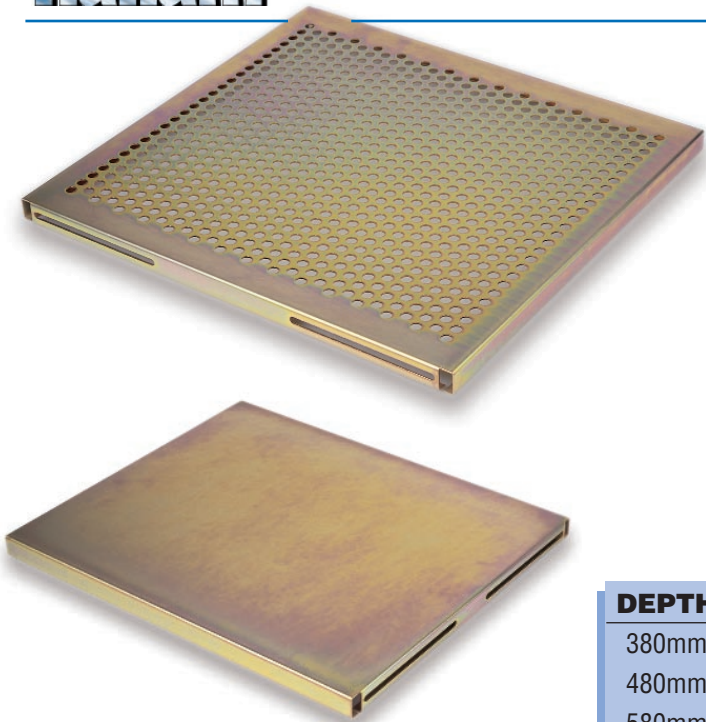
In most cases these accessories will enable you to expand your cabinets` usage and life span by adding extra shelves as well as horizontal or vertical power sources to handle any additional computer hardware you wish to install.

With the variety of precision made telescopic and keyboard shelves, a wider array of fan trays and cable management, our new accessories range will give you more options than ever thought possible to grow with your expanding business.



FIXED SHELVES

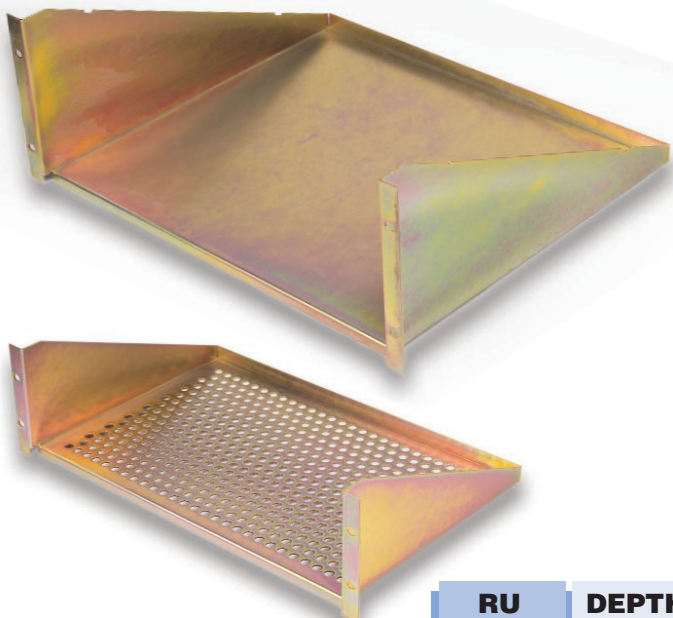
- Mounting of non standard equipment
- 19" & 800 series
- Plain or vented
- Various depths to suit internal cabinet depth
- Standard & heavy duty configurations
- Side slot mounting
- Easily adjustable mounting positions
- Pre installed if positions nominated
- Finish: zinc plated



DEPTH	Plain		Vented	
	19"	800	19"	800
380mm	SH38600	SH38800	SH38600V	SH38800V
480mm	SH48600	SH48800	SH48600V	SH48800V
580mm	SH58600	SH58800	SH58600V	SH58800V
680mm	SH68600	SH68800	SH68600V	SH68800V
780mm	SH78600	SH78800	SH78600V	SH78800V

CANTILEVER SHELVES

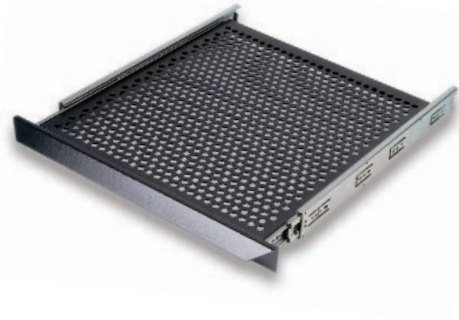
- Mounting of non standard equipment
- 19" & 800 series
- Plain or vented
- Front mounting only
- Easily adjustable mounting positions
- Pre installed if positions nominated
- Finish: zinc plated



RU	DEPTH	Plain		Vented	
		19"	800	19"	800
2	200mm	CS202060	CS202080	CS202060V	CS202080V
3	300mm	CS303060	CS303080	CS303060V	CS303080V
4	400mm	CS404060	CS404080	CS404060V	CS404080V
5	500mm	CS505060	CS505080	CS505060V	CS505080V
6	600mm	CS606060	CS606080	CS606060V	CS606080V

TELESCOPIC SHELVES

- Mounting of non standard equipment
- Withdrawable for access to equipment
- 19" & 800 series
- Plain or vented
- Quick release action for complete removal
- Easily adjustable mounting positions
- Pre installed if positions nominated
- Finish: powdercoated



DEPTH	Plain		Vented	
	19"	800	19"	800
380mm	SS38600	SS38800	SS38600V	SS38800V
480mm	SS48600	SS48800	SS48600V	SS48800V
580mm	SS58600	SS58800	SS58600V	SS58800V
680mm	SS68600	SS68800	SS68600V	SS68800V
780mm	SS78600	SS78800	SS78600V	SS78800V

TELESCOPIC KEYBOARD SHELVES

- Telescopic & pivoting shelf to accept keyboard
- Mounts into standard 19" cabinet
- Keyboard pivots into position when shelf is withdrawn



Note: Keyboard not included

19"	SS103KB
-----	---------

KEYBOARD SHELVES

- Shelf & keyboard to fit standard 19" mounting
- With universal touchpad
- Compatible with Microsoft or IBM PS/2 mouse driver
- Cable adaptors supplied
- Telescopic rails fitted for easy access



19" KBG80-11900

HORIZONTAL POWER

- Rack mounted units.
- 6,8 & 10 point socket combinations available.
- 19" & 800 series.
- 20amp circuit breaker fitted standard.
- 10amp or 15amp standard plug fitted to lead.
- Screw captive plugs - optional.
- Different power combinations - optional.
- Available in 1RU, 2RU & 3RU size configurations.
- Optional recessed units available.



POINTS	19"	800
6	HPD600	N/A
8	HPD801	HPD800
10	HPD1000	N/A

VERTICAL POWER

- Integrated into frame rear post
- Combinations of sockets per RU height
- 20amp circuit breaker fitted standard
- 10amp or 15amp standard plug fitted to lead
- Spacing between points allows for plug packs
- Screw captive plugs - optional
- Dual power - optional
- Different power combinations - optional



RU	POINTS	19"/800
18	8	VPD18800
27	8	VPD27800
27	10	VPD271000
27	12	VPD271200
27	14	VPD271400
27	16 max	VPD271600
39	8	VPD39800
39	10	VPD391000
39	12	VPD391200
39	14	VPD391400
39	16	VPD391600
39	18	VPD391800
39	20	VPD392000
39	24 max	VPD392400

RU	POINTS	19"/800
42	8	VPD42800
42	10	VPD421000
42	12	VPD421200
42	14	VPD421400
42	16	VPD421600
42	18	VPD421800
42	20	VPD422000
42	22	VPD422200
42	24 max	VPD422400
45	8	VPD45800
45	10	VPD451000
45	12	VPD451200
45	14	VPD451400
45	16	VPD451600
45	18	VPD451800
45	20	VPD452000
45	24	VPD452400
45	26 max	VPD452600

- Separate unit mounted inside cabinet
- Combinations of sockets per RU height
- 20amp circuit breaker fitted standard
- 10amp or 15amp standard plug fitted to lead
- Spacing between points allows for plug packs
- Screw captive plugs - optional
- Different power combinations - optional



RU	POINTS	19"/800
18	8	VPU18800
27	8	VPU27800
27	10	VPU271000
27	12	VPU271200
27	14	VPU271400
27	16 max	VPU271600
39	8	VPU39800
39	10	VPU391000
39	12	VPU391200
39	14	VPU391400
39	16	VPU391600
39	18	VPU391800
39	20	VPU392000
39	24 max	VPU392400

RU	POINTS	19"/800
42	8	VPU42800
42	10	VPU421000
42	12	VPU421200
42	14	VPU421400
42	16	VPU421600
42	18	VPU421800
42	20	VPU422000
42	22	VPU422200
42	24 max	VPU422400
45	8	VPU45800
45	10	VPU451000
45	12	VPU451200
45	14	VPU451400
45	16	VPU451600
45	18	VPU451800
45	20	VPU452000
45	24	VPU452400
45	26 max	VPU452600

FAN TRAY

- Air extraction through roof space
- Roof mounted
- Combinations of fans per tray
- 19" & 800 series
- Low noise fans - optional
- Thermostats - optional



DEPTH	FANS	19"	800
480mm	2	FT482060	FT482080
480mm	4	FT484060	FT484080
680mm	2	FT682060	FT682080
680mm	4	FT684060	FT684080
680mm	6	FT686060	FT686080
780mm	2	FT782060	FT782080
780mm	4	FT784060	FT784080
780mm	6	FT786060	FT786080
780mm	8	FT788060	FT788080

PLINTH FAN UNIT

- Provides additional air circulation into cabinet
- Base mounted
- Air intake filters fitted
- 2 fans per unit
- 19" & 800 series
- Low noise fans - optional

FANS	19"	800
2	PFU600	PFU800



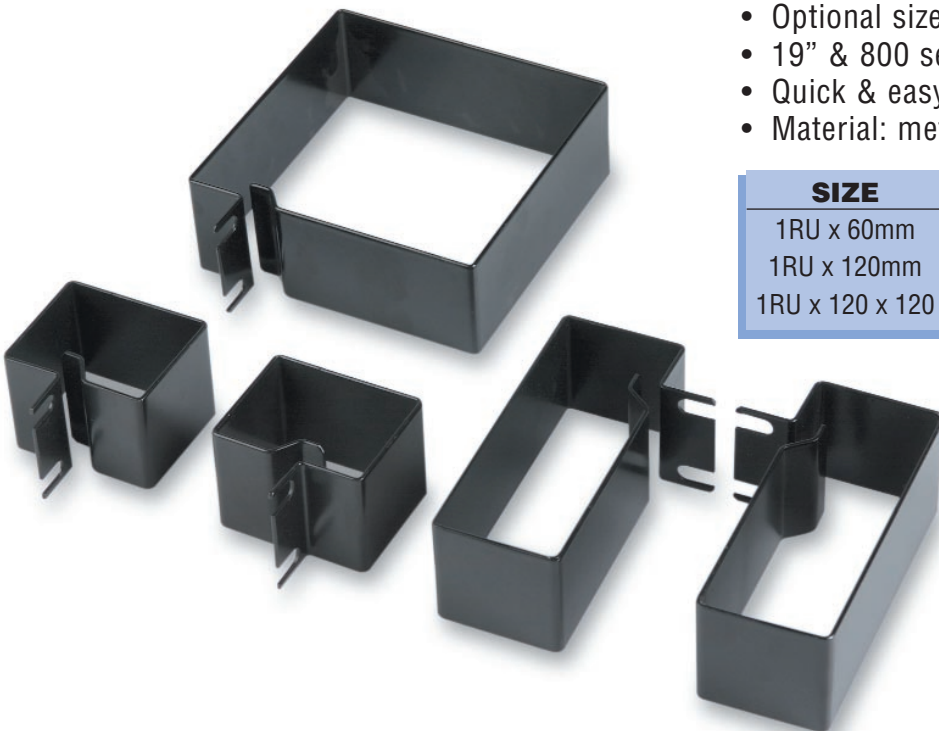


- Management of vertical cables
- Various widths
- Industry standard
- Finish: powdercoated black

RU	75mm	100mm	150mm	225mm	300mm
18	CT1875	CT18100	CT18150	CT18225	CT18300
27	CT2775	CT27100	CT27150	CT27225	CT27300
39	CT3975	CT39100	CT39150	CT39225	CT39300
42	CT4275	CT42100	CT42150	CT42225	CT42300
45	CT4575	CT45100	CT45150	CT45225	CT45300

CABLE SUPPORT BRACKETS

- Vertical management of patch leads
- Utilises side cavity area of cabinet
- Optional sizes for various cable capacities
- 19" & 800 series sizes to suit
- Quick & easy mounting method
- Material: metal, black powdercoated



SIZE	19"	800
1RU x 60mm	CSB1960	CSB1960
1RU x 120mm	CSB19120	CSB19120
1RU x 120 x 120	N/A	CSB12120

CABLE SUPPORT PANELS

- Horizontal management of patch leads
- Plastic & metal brackets available
- Optional sizes for various cable capacities
- 19" series sizes to suit
- 5 cable brackets per panel
- Additional positions on plastic version
- Panel - black powdercoat finish



SIZE	19"
1RU x 60mm	CSP191060
1RU x 60mm	CSP191060P
1RU x 100mm	CSP1910100
2RU x 60mm	CSP192060
2RU x 100mm	CSP1920100

P = plastic

CABLE SUPPORT PANELS - VELCRO

- Horizontal management of patch leads
- Velcro straps for quick release of leads
- 19" series sizes to suit
- 6 straps per panel

SIZE	19"
1RU Velcro	CSPV191000



HINGED CABLE CARRIERS



- Prevents sagging and tangling of cables
- Used on telescopic shelves, drawers & equipment
- Cable fastened with cable ties

EXTENSION	PART No.
725mm	HCC9-2
725mm	HCC11

CABLE CHIMNEY



- Routing of cables from ceiling to cabinet roof
- Mounts on roof panel with cutout
- Removable front cover for easy access to cables
- 2 standard sizes available
- Optional sizes made to order

SIZE	PART No.
150x150x600	CC1515600
150x150x1200	CC1515120

PATCH LEAD MANAGER



- Slots provide individual management of patch leads
- Snap-on front cover to conceal patch leads
- Manufactured from durable aluminium
- Finish: black powdercoat

PART No.
PLM1000

EARTH BAR

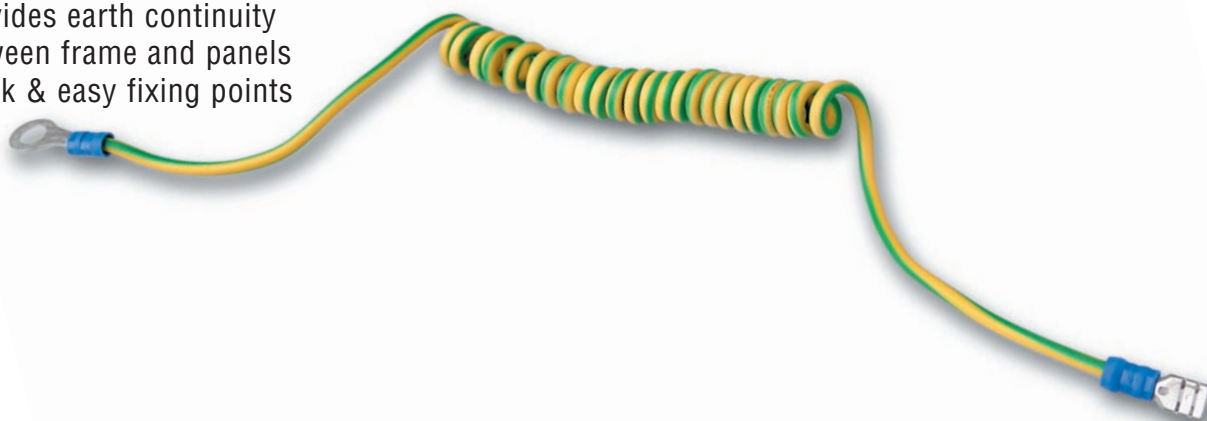
- Multiple earthing points
- Insulated from frame
- Heights to suit ru of cabinet
- Material: copper

RU	SCREW POSITIONS	PART No.
18	4	EB1800
27	10	EB2700
39	14	EB3900
42	14	EB4200
45	14	EB4500



EARTH LEAD

- Provides earth continuity between frame and panels
- Quick & easy fixing points



VERTICAL TELEPHONE DISTRIBUTION

- Pre punched metal work only
- Accepts standard telephone sockets
- Finish: black powdercoat



RU	SOCKET POSITIONS	PART No.
18	8	VTD1800
27	14	VTD2700
39	18	VTD3900
42	20	VTD4200
45	22	VTD4500

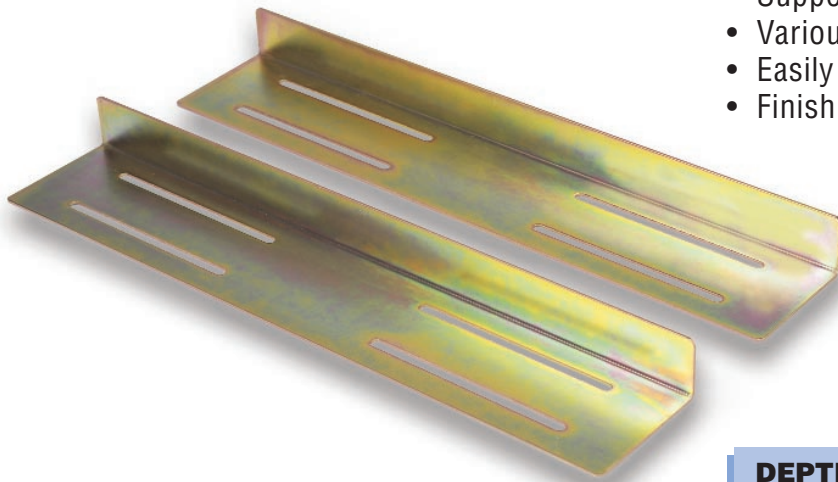
TELESCOPIC DRAWERS



- Storage for patch leads , test equipment & manuals
- Standard heights & depths
- 19" & 800 series
- Quick release action for complete removal
- Pre installed if positions nominated
- Finish - powdercoated

Plain			
RU	DEPTH	19"	800
2	380mm	SD203860	SD203880
3	480mm	SD304860	SD304880
4	680mm	SD406860	SD406880

EQUIPMENT SUPPORT BRACKET



- Support for heavy equipment
- Various depths to suit cabinet
- Easily adjustable mounting positions
- Finish - Zinc plated & yellow passivate

DEPTH	PART No.
380mm	EB380
480mm	EB480
580mm	EB580
680mm	EB680
780mm	EB780

BLANK PANELS

- Available various ru heights
- 1RU - 6RU
- Used as infill panels
- Vented - optional
- Material - Steel or Aluminium
- Finish - powdercoat , anodised



Steel

BLANK PANEL	PART No.
19" x 1RU	BP100
19" x 2RU	BP200
19" x 3RU	BP300
19" x 4RU	BP400
19" x 5RU	BP500
19" x 6RU	BP600

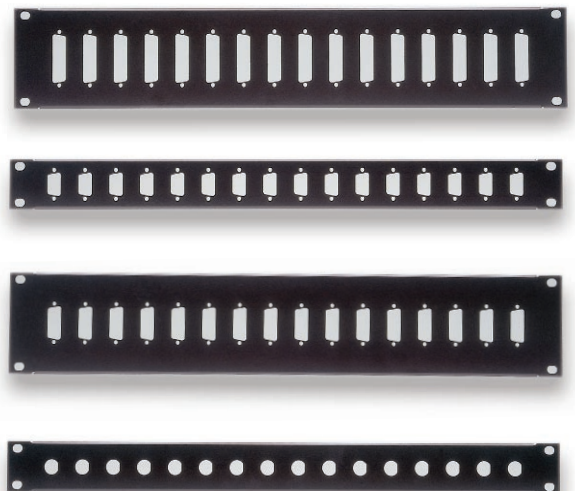
Aluminium

BLANK PANEL	PART No.
19" x 1RU	BPA100
19" x 2RU	BPA200
19" x 3RU	BPA300
19" x 4RU	BPA400
19" x 5RU	BPA500
19" x 6RU	BPA600
19" x 8RU	BPA800

PATCH PANELS

- Industry standard connector configurations
- DB9, DB15, DB25, BNC
- Special configurations made to order
- Material - Steel
- Finish - powdercoat black

PANEL DESCRIPTION	PART No.
19" x DB9 x 16	PPDB90
19" x DB15 x 16	PPDB150
19" x DB25 x 16	PPDB250
19" x BNC x 16	PPBC001





- Storage of documents and manuals
- A4 maximum size
- Metal: powdercoat finish - grey

PART No.

DH1000

CASTORS & LEVELLING FEET



CASTORS

- Fitted to base of cabinet
- High load carrying capacity
- Brake mechanism fitted to front castors
- Combination of castors & levelling feet made to order

No. PER SET

4

PART No.

CW1000



LEVELLING FEET

- Fitted to base of cabinet
- Height adjustable
- Provides cabinet stability on uneven surfaces
- Combination of levelling feet & castors made to order

No. PER SET

4

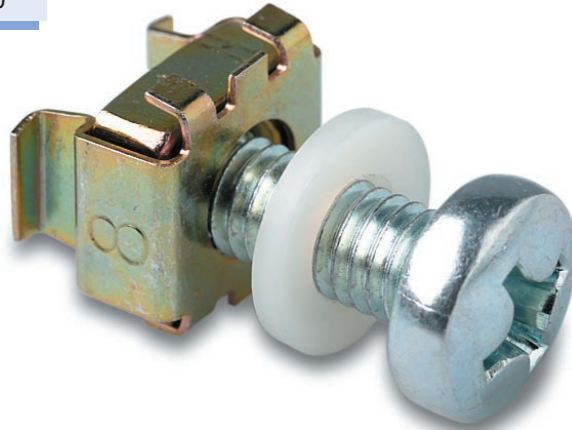
PART No.

LF1000

MOUNTING KIT

- Standard M6 screw, nylon washer & caged nut

No. PER SET	PART No.
50	MK500
100	MK1000



JOINER KIT

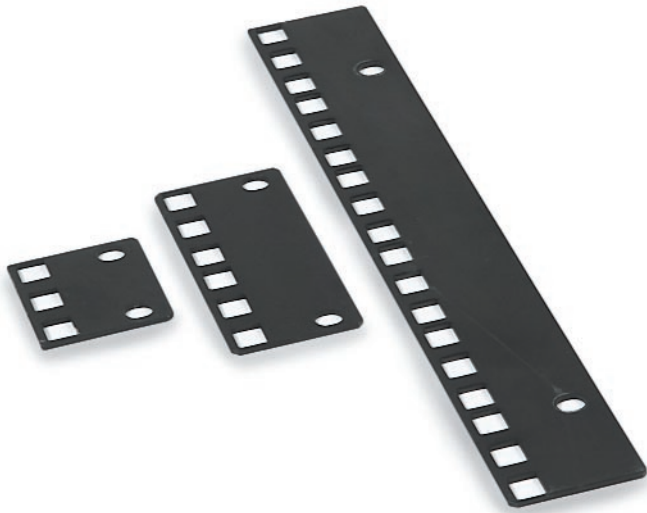
- Joiner kit for standard cabinet only
- Used to join cabinets together when ordered as a suite
- Supplied with all necessary fixing hardware

RACK RU	PART No.
18	JK1800
27	JK2700
39	JK3900
42	JK4200
45	JK4500

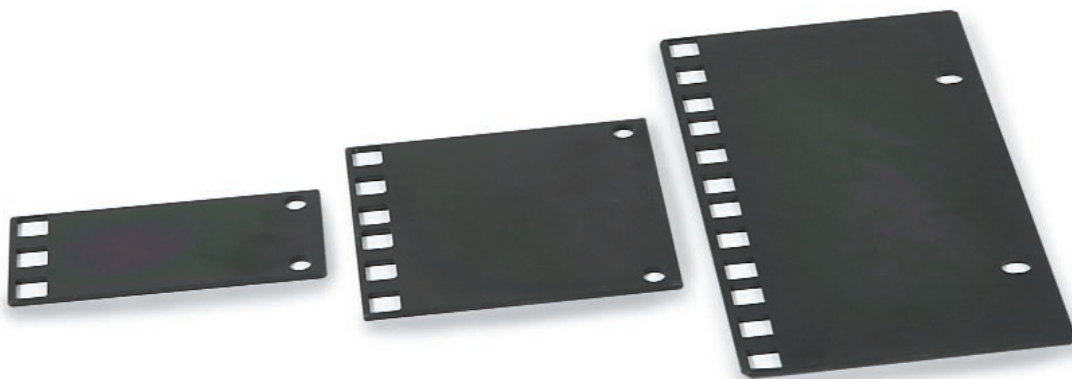
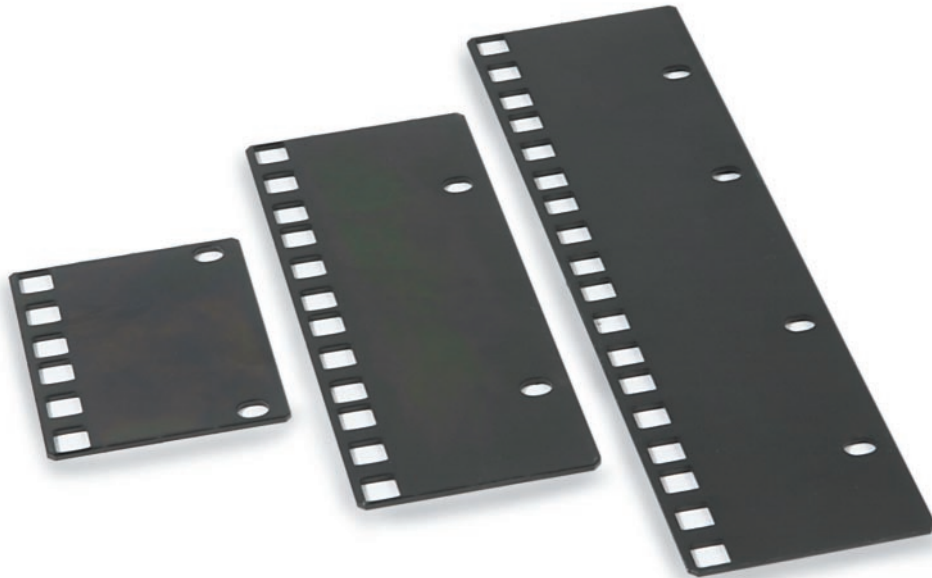


REDUCTION PLATES

- Reducing plates for 800 series cabinets
- Reduces 26" mounting to 19", 21" & 23"
- Supplied with all necessary fixing hardware



SIZE	PART No.
26" - 19" x 2RU	RP261920
26" - 19" x 4RU	RP261940
26" - 19" x 6RU	RP261960
26" - 21" x 2RU	RP262120
26" - 21" x 4RU	RP262140
26" - 21" x 6RU	RP262160
26" - 23" x 2RU	RP262320
26" - 23" x 4RU	RP262340
26" - 23" x 6RU	RP262360



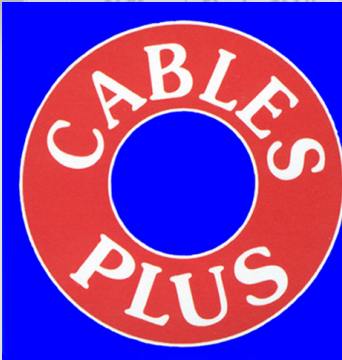
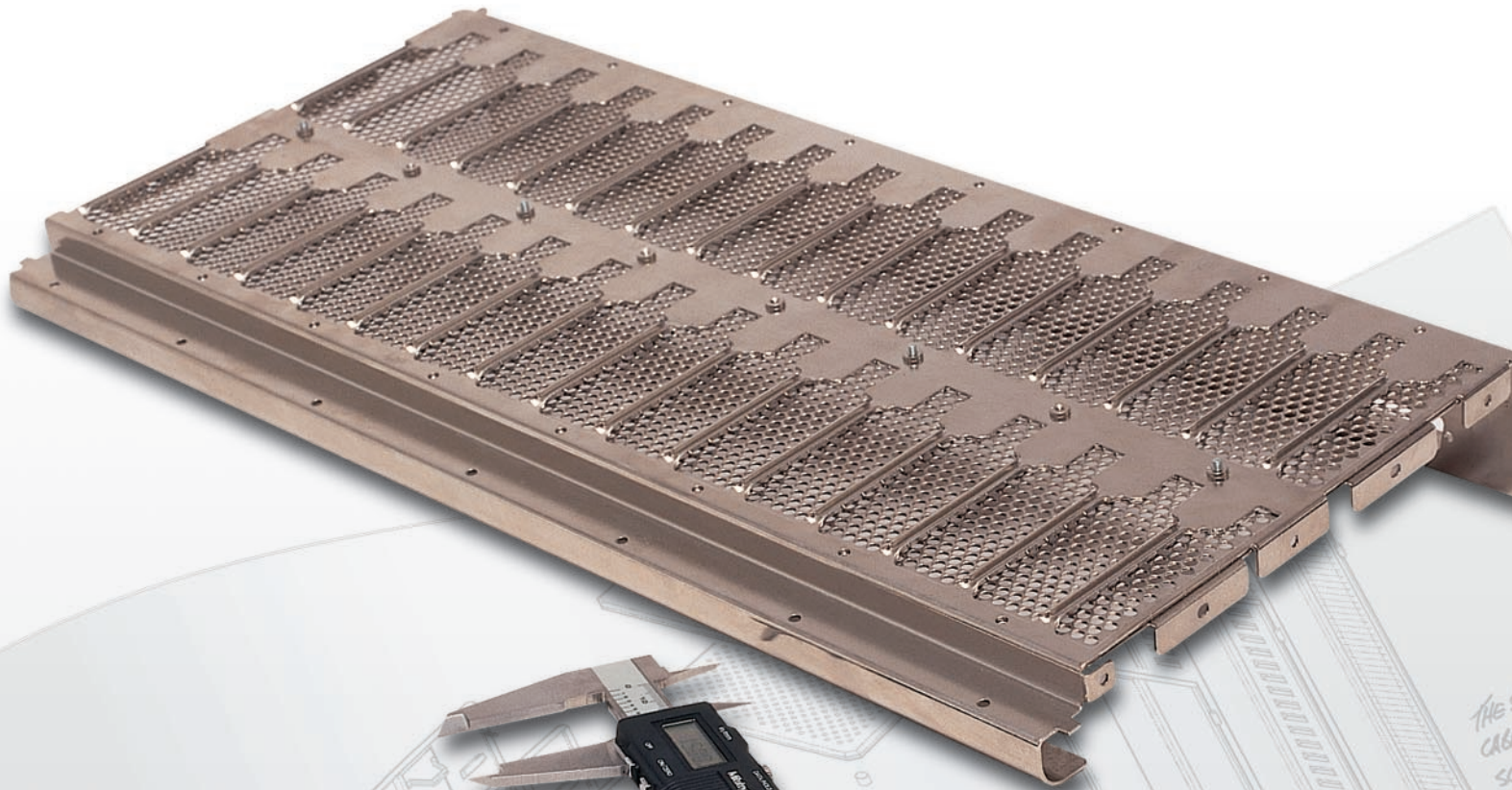
TELESCOPIC RAILS

- Pullout telescopic rails for attaching to shelves and equipment.
- Load rating 40-50 kg dependant on length specified
- Supplied with 19" mounting brackets
- Disconnect feature standard
- Full extension of slide length
- Heavy duty rails available to 250 kg load rating



RAIL LENGTH	PART No.
350mm	TSR350
400mm	TSR400
450mm	TSR450
500mm	TSR500
550mm	TSR550
600mm	TSR600
650mm	TSR650
700mm	TSR700

At Hallam Manufacturing our experienced engineering and design department are on hand to help create any Rack, Cabinet System, or Accessory to cater for your individual requirements.



Authorised Hallam Rack Distributor

VICTORIA -

Ph: 03 9329 6866
Fx: 03 9329 6052
Email: cpsales@cablesplus.com.au

TASMANIA -

Ph: 03 6431 8660
Fx: 03 6431 4430
Email: cablesplustas@bigpond.com

