

Cable Zone



CABLE ZONE COMPONENTS

FEATURES



Hallam Cable Zones now provide an alternative for the management & organisation of high density cabling applications within a rack or suite of racks

The management of cables within a rack can have a direct impact on the effective airflow into network equipment, the Cable Zone provides the necessary infrastructure to manage cabling in a manner that will improve airflow into your equipment.

Cable Zone sections allow for patch leads to be kept in a horizontal plane with all “slack” cable being stored within the zone body completely away from any equipment air intakes.

One unique feature of the Cable Zone is the Zero RU mounting of patch panels where patch leads can be connected from the Cable Zone to the active equipment making the full height RU's within a rack available for active equipment.

Cable Zone can be configured to your specific requirements using the various options available. The basic top and base sections act as the “joiner” between two or more racks, or in a stand alone situation using an “End Frame” section.

Applications

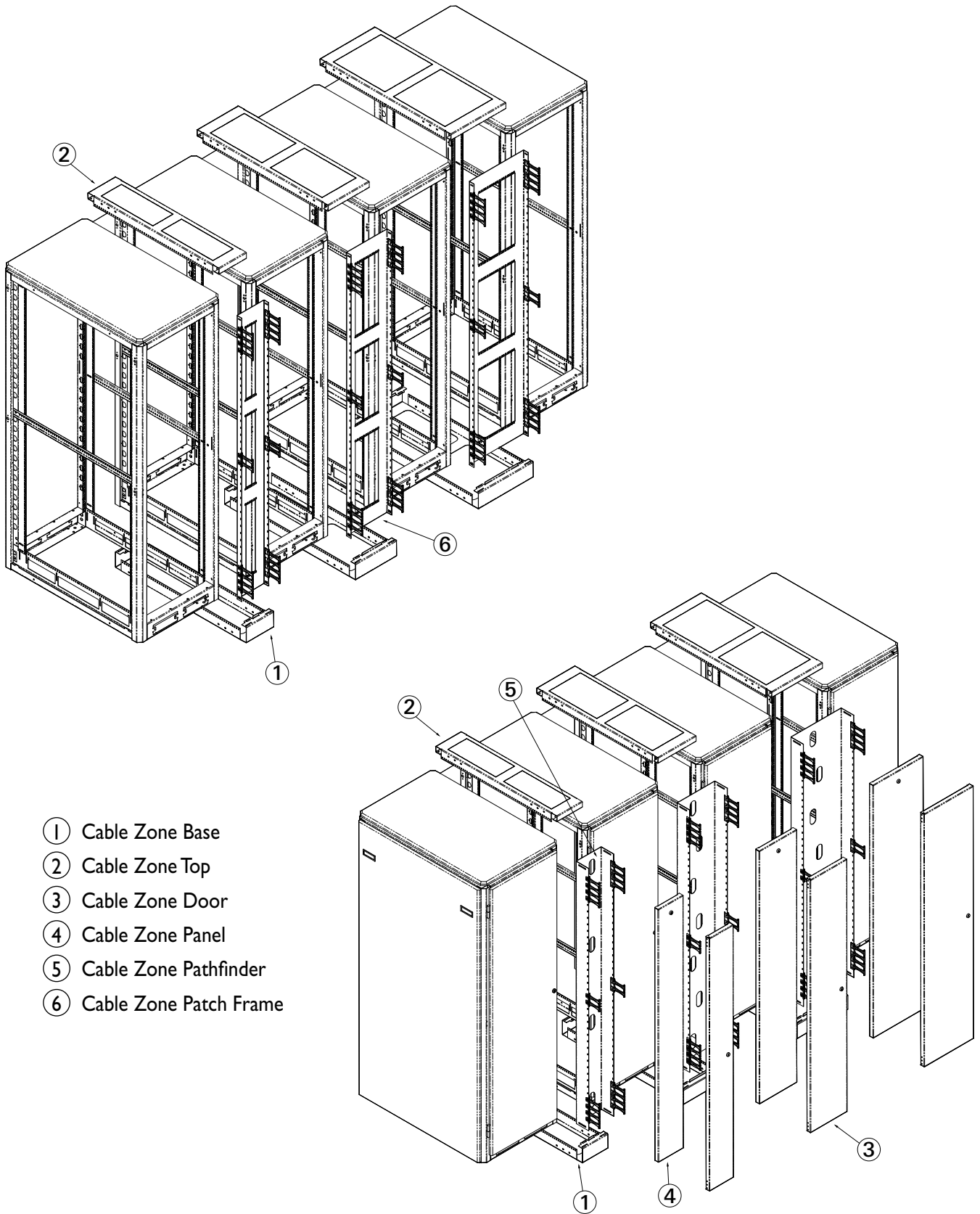
- Data centres
- Building distributors
- Communications
- High density cabling
- Network
- Telecommunications

Design

- Easy assembly to 19” & 800 series racks
- Applicable to 39,42 & 45RU height cabinets
- Pathfinder cable management channels
- Industry standard cable tray
- 4 Internal zone widths
- Front & rear cable management options
- Lockable doors – optional
- Lockable panels – optional
- Zero RU mounting for patch panels – optional
- Retrofit to existing racks
- Pass through ports for cable front to rear
- Cable spools – optional
- Highly durable powdercoat finish
- Customised design and manufacture



Cable Zone Components



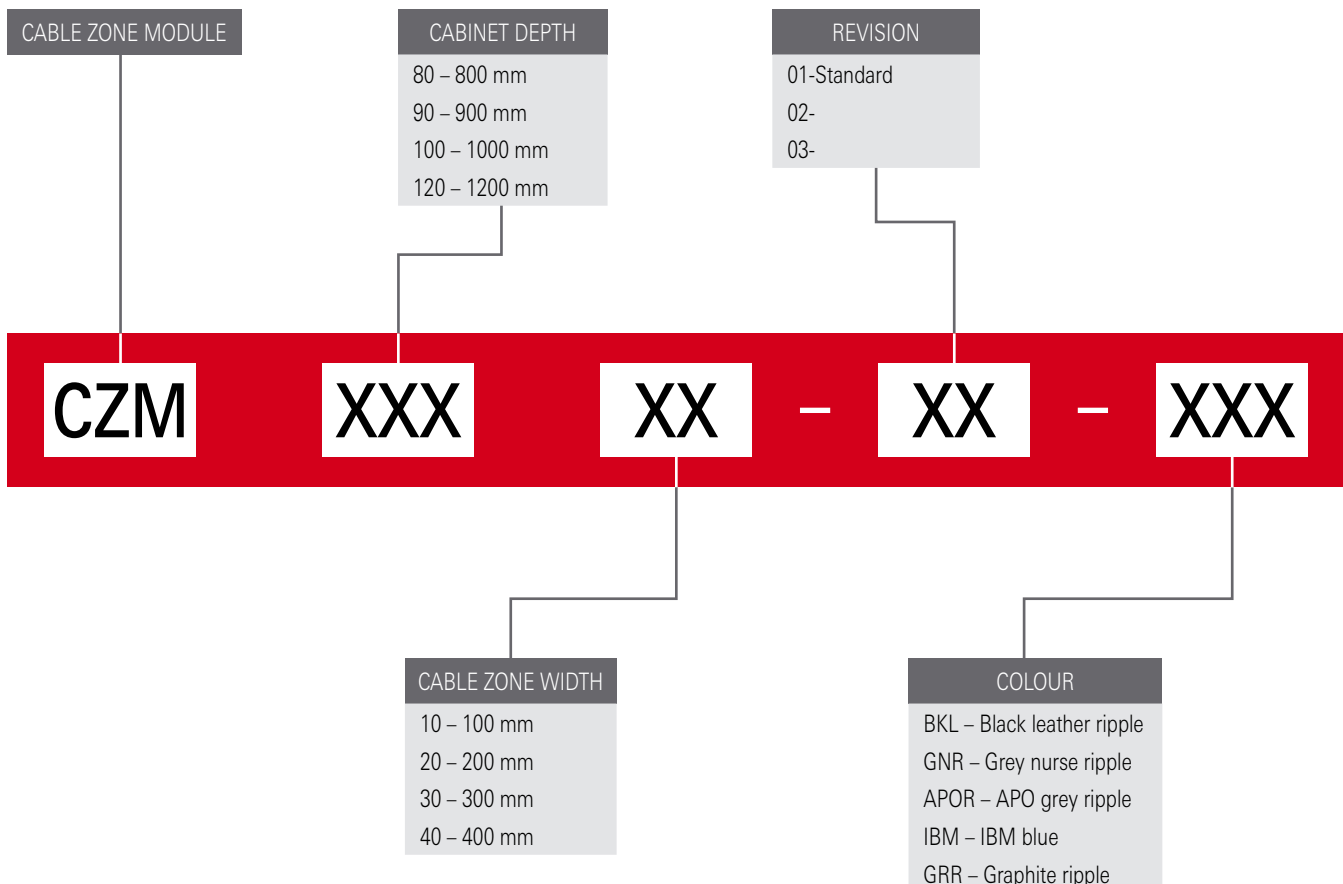
Cable Zone Modules



Features

- Top & base sections
- Joins two cabinets together in a suite
- Open areas for cable access in base section
- Knockouts for cable access in top section

CONFIGURING YOUR MODULES



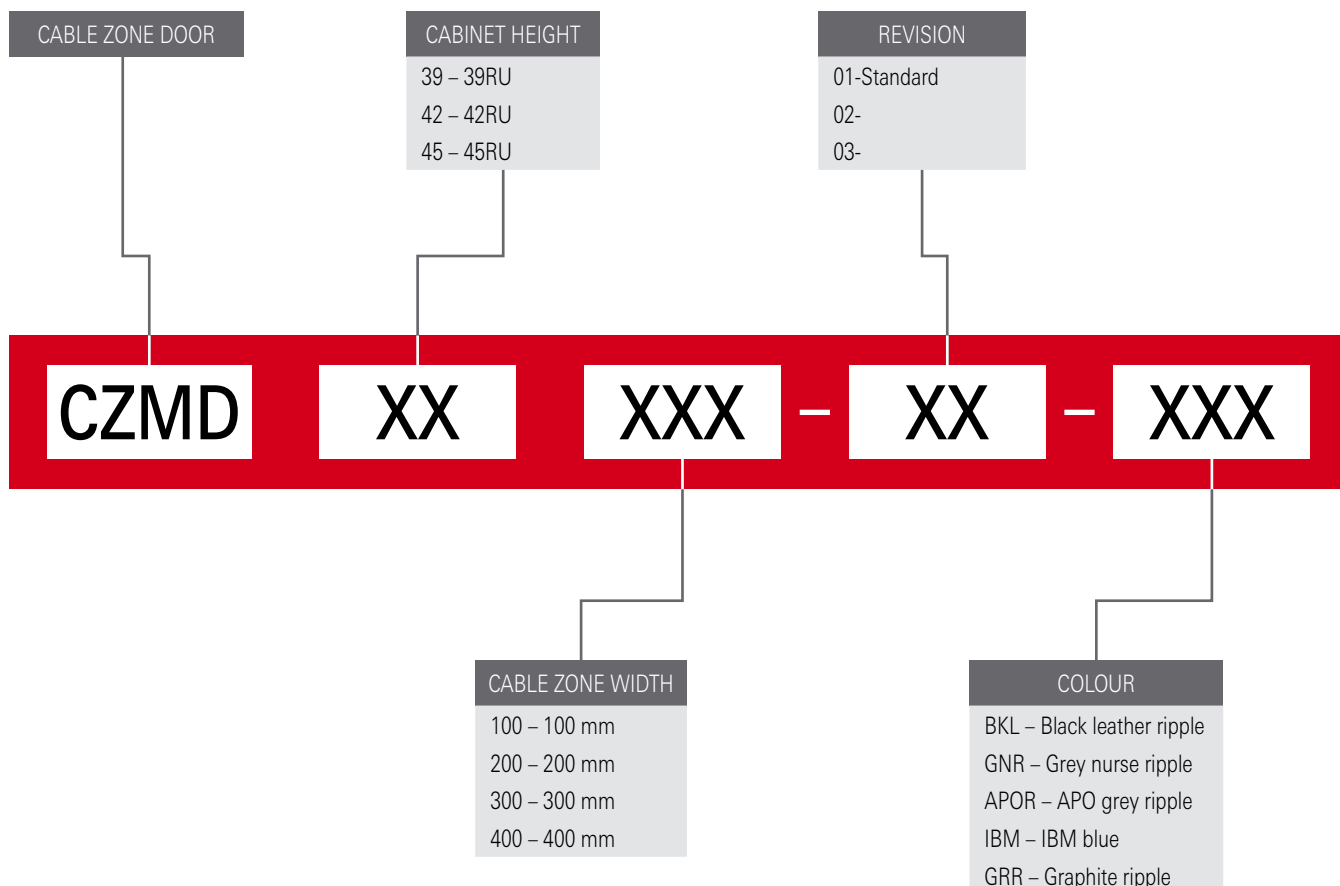
Cable Zone Doors



Features

- Solid metal door
- Front and/or rear mounting on Cable Zone
- Two point locking
- Quick release hinges for easy opposite hand mounting
- Keying same as rack doors

CONFIGURING YOUR DOORS



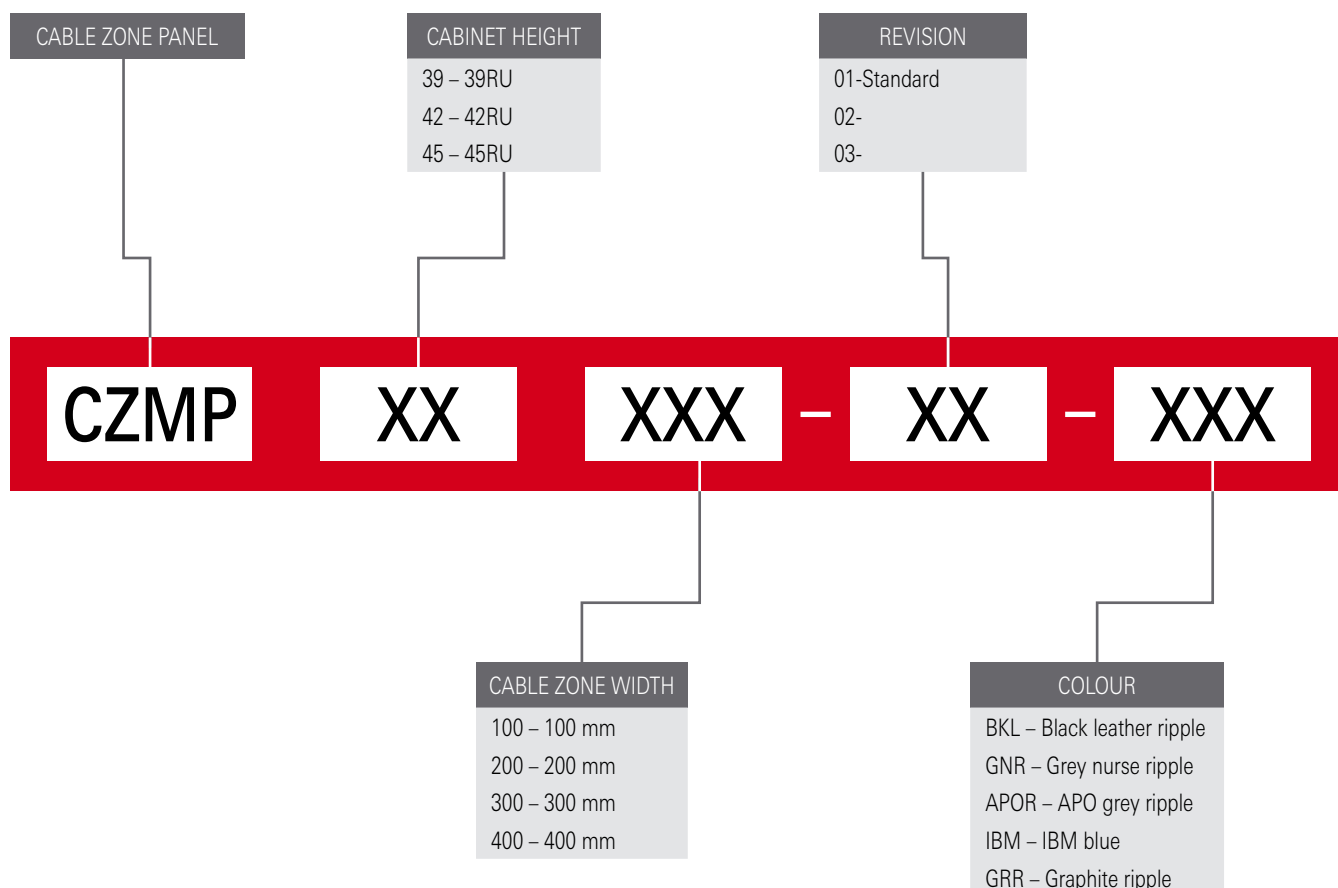
Cable Zone Panels



Features

- Solid metal panel
- Front and/or rear mounting on Cable Zone
- Locking at top of panel
- Keying same as rack doors

CONFIGURING YOUR PANELS



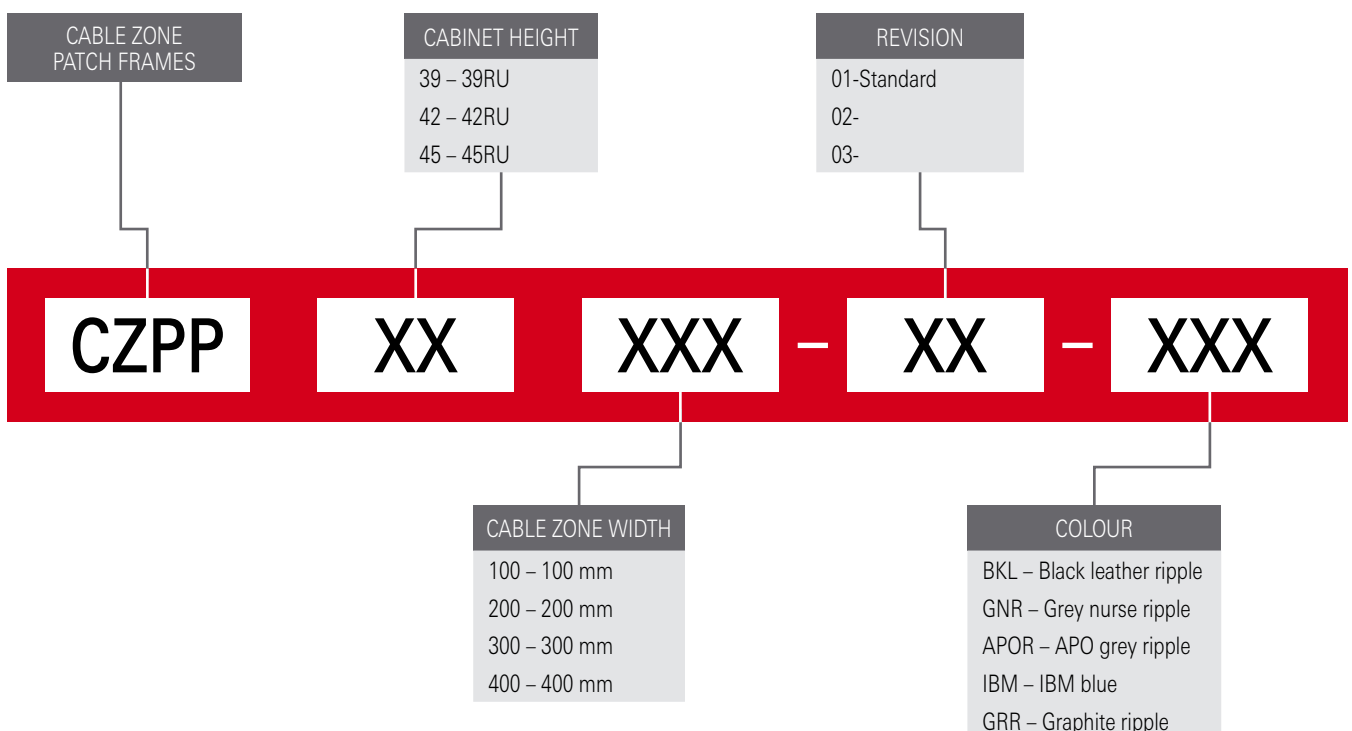
Cable Zone Patch Frames



Features

- Zero RU mounting of patch panels within the Cable Zone
- Front and/or Rear Mounting
- Adjustable within depth of Cable Zone area
- Multiple mounting positions for patch panel channel dependant on Cabinet height and Zone width .
 - 39RU x 100mm – 6RU total
 - 39RU x 200mm – 12RU total
 - 39RU x 300mm – 18RU total
 - 39RU x 400mm – 24RU total
 - 42RU x 100mm – 6RU total
 - 42RU x 200mm – 12RU total
 - 42RU x 300mm – 18RU total
 - 42RU x 400mm – 24RU total
 - 45RU x 100mm – 8RU total
 - 45RU x 200mm – 16RU total
 - 45RU x 300mm – 24RU total
 - 45RU x 400mm – 32RU total

CONFIGURING YOUR PATCH FRAMES



Cable Zone Pathfinder Channel & Spools



Pathfinder Channel



Cable Spools

Pathfinder Channel

Features

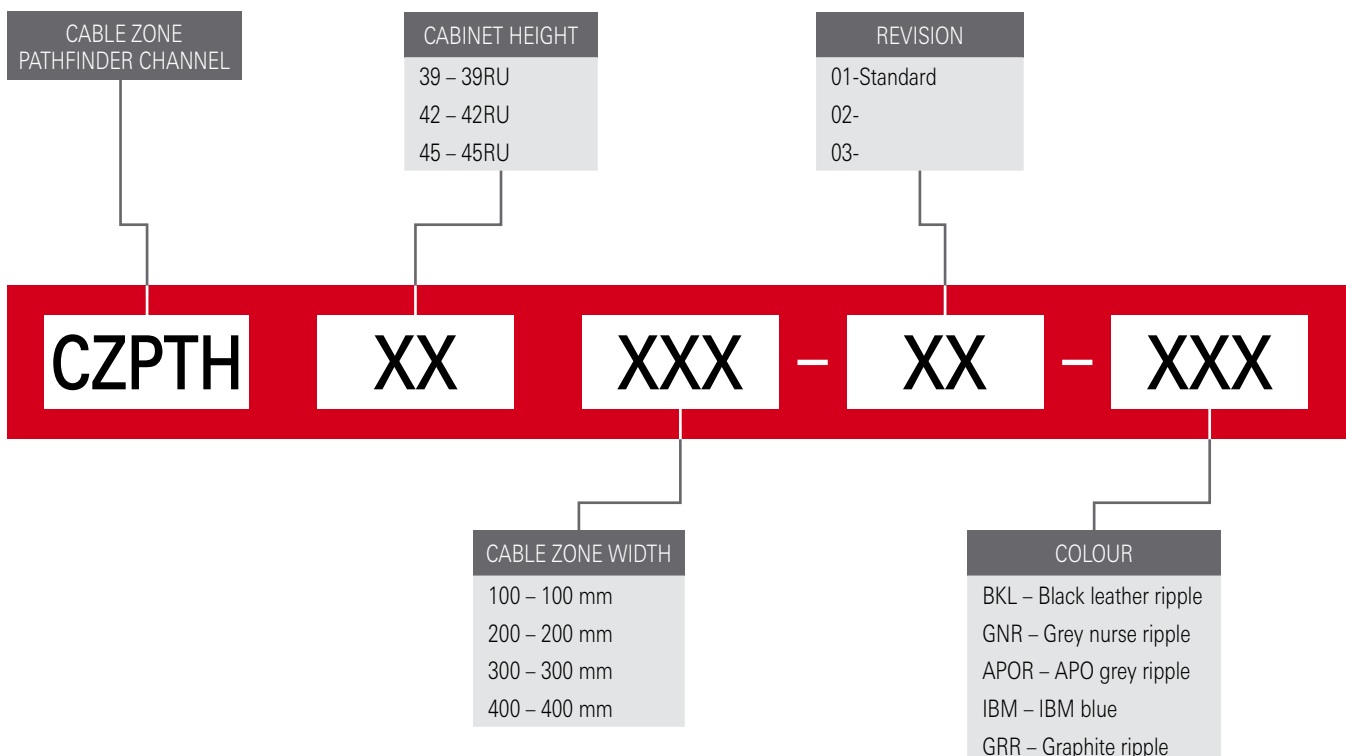
- Management of patch leads
- Front and/or rear mounting
- Adjustable within depth of Cable Zone area
- Cable pass through ports in rear of channel
- Cable spools for “slack” management – optional

Cable Spools

Features

- Easy mounting onto Pathfinder Channel
- Front and/or rear mounting
- Management of patch lead / cable slack
- **P/No. PTHCSS-01-BKL**

CONFIGURING YOUR PATHFINDER CHANNEL



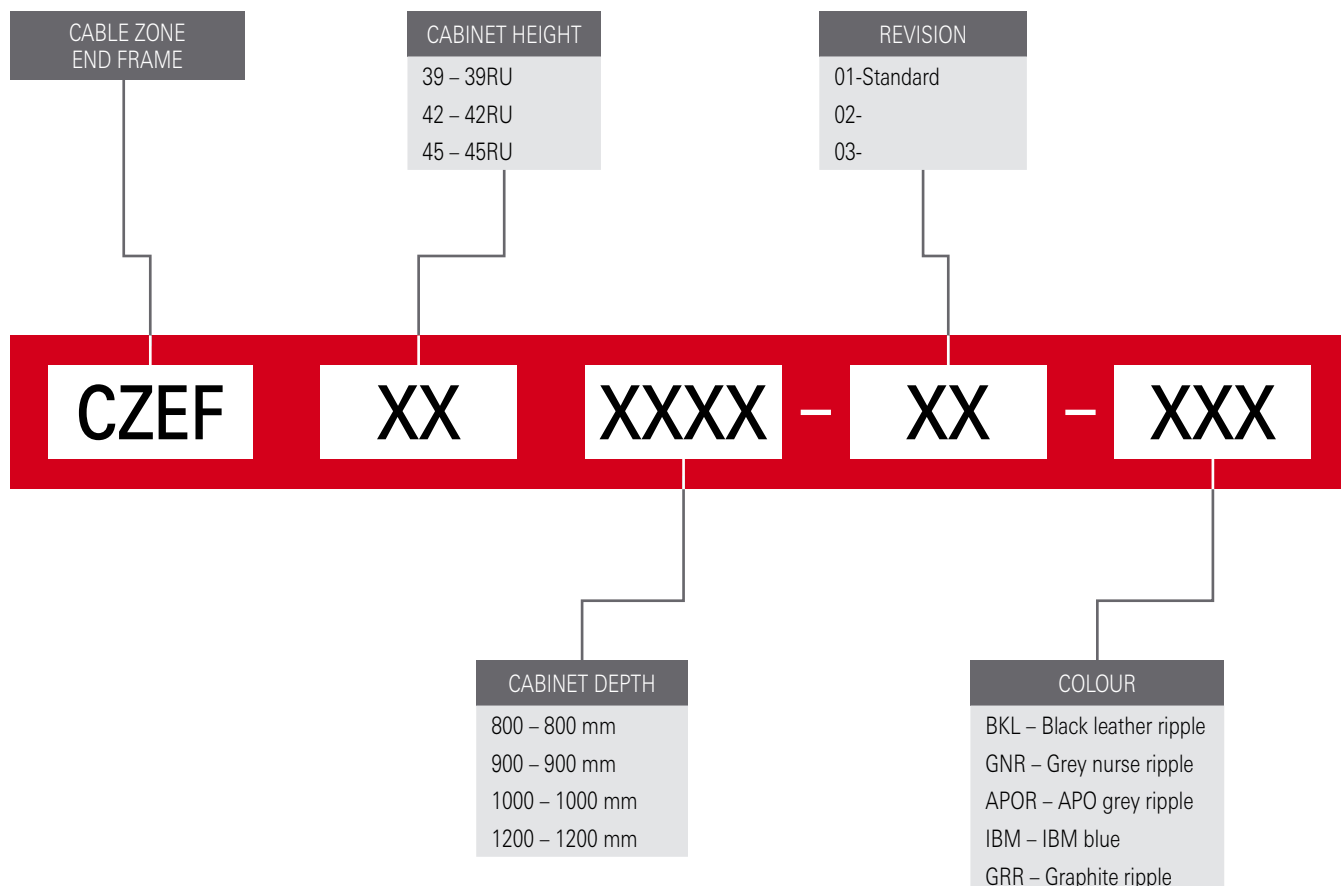
Cable Zone End Frame



Features

- Complete end of row / suite with Cable Zone end frame
- Attaches to Cable Zone module same fixings as for rack
- End frame accepts standard rack side panel

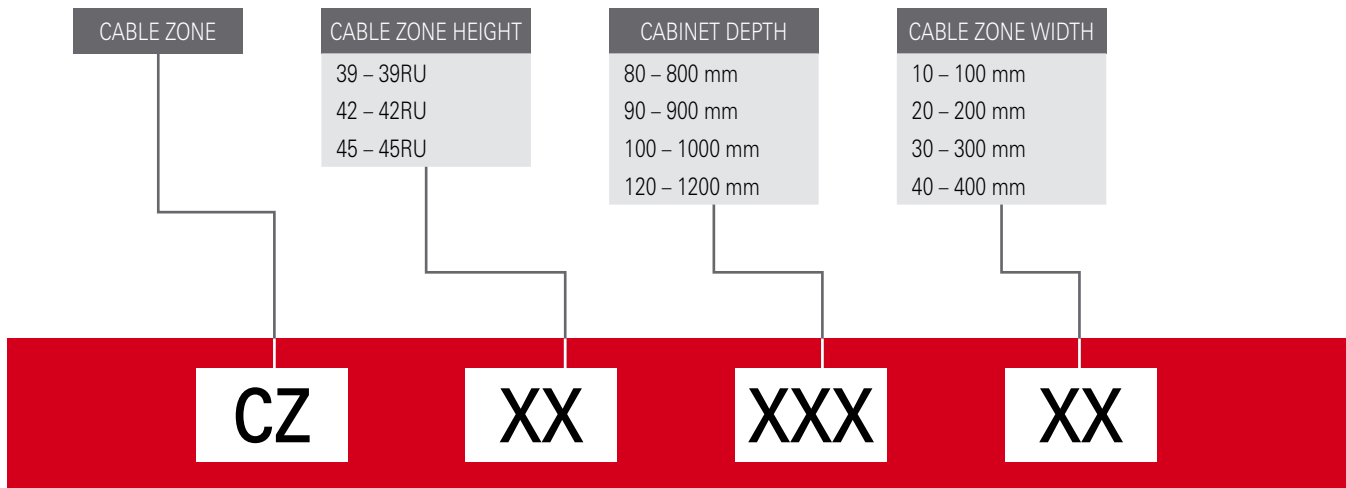
CONFIGURING YOUR END FRAME



How to Configure Your Cable Zone



To configure your Cable Zone follow the example shown below.



Configured components are expressed in examples below:

MODULE:	CZM Module	XXX Depth	XX Width	- XX Revision	- XXX Colour
DOOR:	CZMD XX Cabinet Height	XXX Width	- XX Revision	- XXX Colour	
PANEL:	CZMP XX Cabinet Height	XXX Width	- XX Revision	- XXX Colour	
PATCH FRAME:	CZPP XX Cabinet Height	XXX Width	- XX Revision	- XXX Colour	
PATHFINDER CHANNEL:	CZPTH Cabinet	XX Height	XXX Width	- XX Revision	- XXX Colour
END FRAME:	CZEF Cabinet	XX Height	XXXX Depth	- XX Revision	- XXX Colour