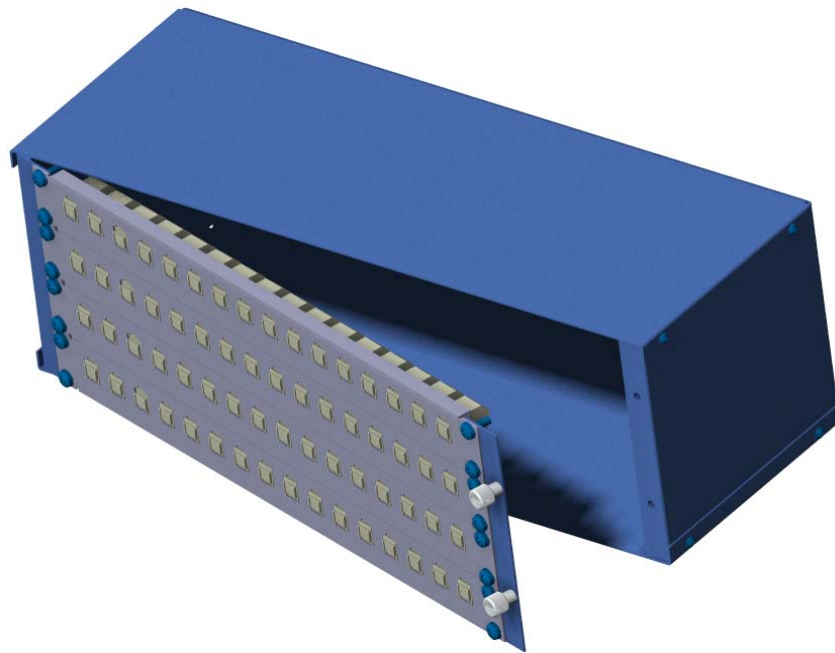
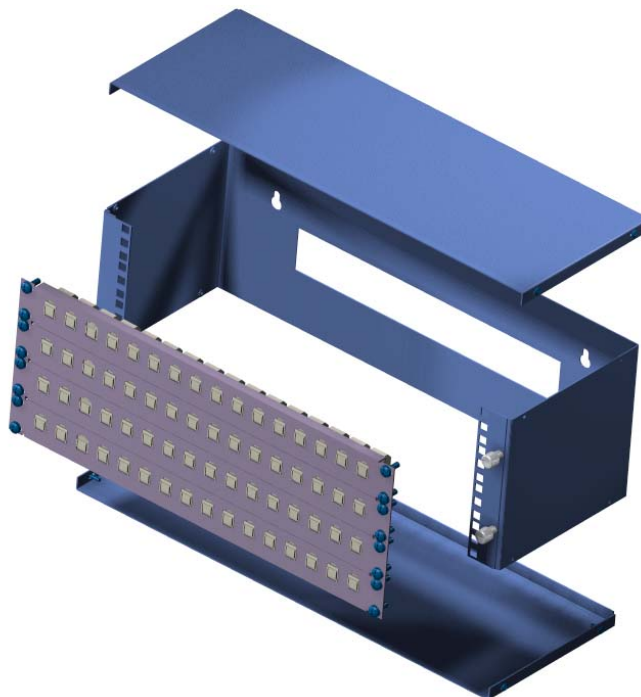


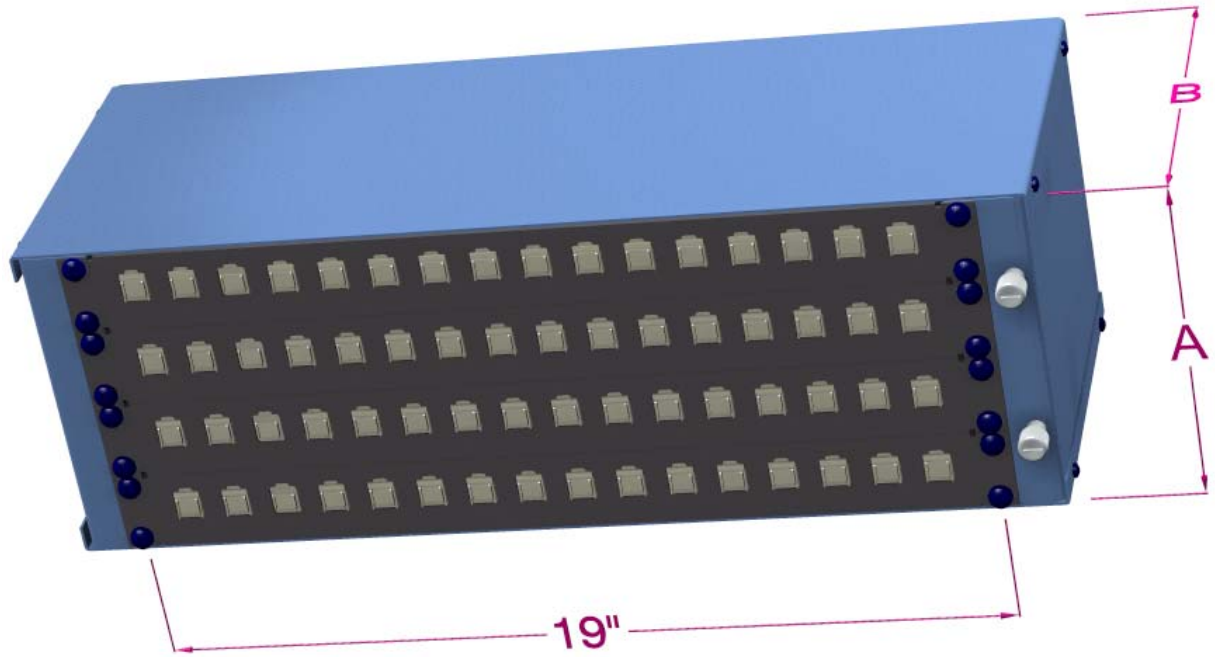


Wall Brackets - Hinged



Hallam manufacture a range of simple yet effective wall mount 19" enclosures. Used for a small network installation these units are available in various height and depth configurations. The hinged wall bracket allows for patch panels etc to be hinged away from mounting area for ease of cabling and installation. Optional top and bottom covers can be ordered to suit.





P/No	Description	Dim "A"	Dim "B"
19WBH2	2RU x 19" x 100mm DEEP	2RU	100mm
19WBH2A	2RU x 19" x 200mm DEEP	2RU	200mm
19WBH2B	2RU x 19" x 300mm DEEP	2RU	300mm
19WBH4	4RU x 19" x 100mm DEEP	4RU	100mm
19WBH4A	4RU x 19" x 200mm DEEP	4RU	200mm
19WBH4B	4RU x 19" x 300mm DEEP	4RU	300mm
19WBH4C	4RU x 19" x 400mm DEEP	4RU	400mm
19WBH6	6RU x 19" x 100mm DEEP	6RU	100mm
19WBH6A	6RU x 19" x 200mm DEEP	6RU	200mm
19WBH6B	6RU x 19" x 300mm DEEP	6RU	300mm
19WBH6C	6RU x 19" x 400mm DEEP	6RU	400mm
19WBC100	COVER x 100mm DEEP		
19WBC200	COVER x 200mm DEEP		
19WBC300	COVER x 300mm DEEP		
19WBC400	COVER x 400mm DEEP		



Authorised Hallam Rack Distributor

VICTORIA -

Ph: 03 9329 6866
 Fx: 03 9329 6052
 Email: cpsales@cablesplus.com.au

TASMANIA -

Ph: 03 6431 8660
 Fx: 03 6431 4430
 Email: cablesplustas@bigpond.com